



1 Stop Shop

www.ciswo.org.uk

february 2005 newsletter

FOCUS ON YORKSHIRE

Partnerships go from strength to strength

Extended range of courses

Healthy Living Centre

Introducing golf to young people

Cortonwood goes from strength to strength working in partnership with statutory and voluntary sector partners.

Dearne Valley College continues to extend the choice of courses available at the Welfare, and recently committed further investment with an up grade of the IT equipment.

The Healthy Living Centre housed in the new extension has resulted in many more users of the Welfare with activities taking place for all sections of the community.

The YMCA, based in the HLC, has organised a highly successful golf group, introducing young

Cortonwood



people to a sport many had not had the opportunity to access before.

Numbers up at renovated building

Grade II listed building

Wind and water proof at last

Building work is now complete. The grade II listed building has been re roofed and has had new windows installed, funded by CRT, all the work was done under the close supervision of the Local Authority conservation officer.

The Welfare is now wind and water proof after years of using

Brodsworth

buckets to catch the drips when it rained.

There has been an increase in the numbers using the welfare and more groups and organisations are using the welfare.



INSIDE THIS ISSUE

PONTEFRACT - page 2.
BENTLEY - back page

CROFTON (NOSTELL) - page 3
1 STOP SHOP UPDATE - back page

Pontefract

Multi-use community centre

The Disabled Miners' Centre, Pontefract, has been successfully relaunched as The Yorkshire Coalfield Resource Centre – a One-Stop Shop. The Centre will be known as Thornycroft, the name of the original site.

The Disabled Miners' centre previously provided services for retired miners, mainly as a day centre catering for over a hundred visitors on a daily basis.

Thornycroft now provides a multi-use community centre for the local area and beyond. A range of adult education courses is on offer along with the continuation of the day centre.

A centre manager has been appointed and will start work mid January.

CRT, and a range of other funders funded the redevelopment and extension work, costing in excess of £700,000

Thornycroft will be the base for the Mining the Potential Team, the Yorkshire One Stop Shop



Belly dancer above on Opening Day, and Anne White pictured below in the kitchens.

Development Officer, the Yorkshire Social work team and CISWO staff who administer the day to day running of CISWO activities across the Yorkshire region.



Crofton / Nostell

Name change

Nostell Miners Welfare, operating under the name of Crofton Community Centre, is situated on the outskirts of Wakefield and is at the end of what appears to be a dead end in the road.

Its hidden location – just ask other Yorkshire Welfare trustees who go there for the first time – led to a decline in use after the pit closed. Membership was falling and the relevance of the “Welfare” to the new non-mining community of Crofton was questioned.

The Trustees decided upon a change in the name for the Welfare to Crofton Community Centre – not an easy decision to make. This name change was the start of the long process of redevelopment of the site. Nostell Colliery has a long sporting tradition and wanted to develop recreation facilities as well as a One Stop Shop.

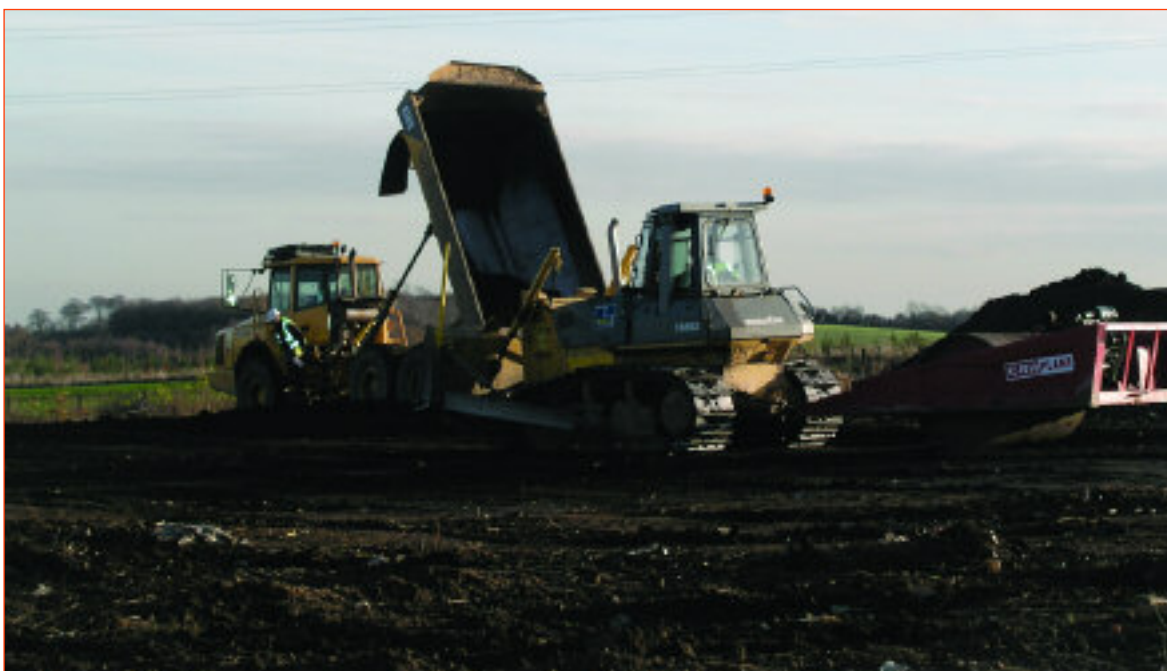


The work begins.

The project has been driven by the two of the trustees Granville Marshall and Alan Gardner who spend many hours a day at the Centre. Alan was last seen loading a van with lockers and kitchen fittings from a recently closed Selby mine.

After many delays work has finally begun work on the redevelopment of the Welfare. The site currently resembles an open cast mine, with huge earth moving equipment transforming

adjacent land in to a new community sports and recreation facility. The work is being funded by grants from CRT, Community Fund and Sport England. Along with the new recreational facilities the Community Centre will be receiving a major £300,000 face-lift. The enterprising trustees of Crofton Community Centre have brought together a number of local sporting teams to be part of the new venture.



Fresh start and Sure Start...

New chair and new partnerships

New initiatives for 2005

The One Stop Shop project has been a long and sometimes difficult one. However, 2005 offers a brighter future.

After the disappointment caused by the rejection of the Community Fund bid and the deferral of the CRT, the steering group has elected a new Chair.

The steering group are now working in close partnership with Churches Together for Regeneration, and North Doncaster Development Trust to ensure the future success of the project.

Bentley

On a positive note, The Sure Start Centre located on the Welfare site will be operational in the new year, and a NOF

funded MUGA should be located to the rear of Sure Start by the end of spring 2005.



ONE STOP SHOP UPDATE

Western Area

Phase 1

Bold	Refurbishment complete
Florence	Opened 2003
Arley	Closed September 2003
Lea Hall	Opened 2002
Norton	Opened March 2004
West Cannock	Opened February 2004

Phase 2

Clockface	Funding applications submitted
Llay	Funding applications submitted
Amington	Refurbishment completed

South Wales

Phase 1

Fernhill & Blaenrhondda:	Opened November 2004
Tylorstown	Progress continuing
Pontyates	Opened June 2003
Maerdy	Closed January 2001
Abertillery	Opened June 2003
Abercrave	Opened November 2002

Phase 2

Resolven	Funding applications submitted
Llandybie	New services being developed

Scotland

Phase 1

Croy	Opened May 2004
Coalburn	Opened December 2003
Macmerry	Opened 2003
Loganlea	Opened January 2004

Phase 2

Auchinleck	Work progressing
Denbeath	Building work starts in January 2005
Blantyre	Business Plan being developed

Yorkshire

Phase 1

Brodsworth	Work complete
Bentley	Work complete
Silverwood	Opened 2002
Cortonwood	Funding application submitted for Phase 3 refurbishment

Phase 2

Pontefract	Refurbishment commenced
Nostell	Work started January 2005
Beighton	Work progressing

North East

Phase 1

Ashington Hirst	Open December 2004
Pegswood	Phase I Refurbishment to commence January 2005
Stakeford & Bomarsund	Phase I Refurbishment to commence January 2005
Easington	Funding applications being prepared

Phase 2

Blackhall	Phase I Funding Application submitted
Vane Tempest	Proposals being prepared

East Midlands

Phase 1

Hilcote	Work commenced July 2005
Donisthorpe	Opened 2003
Bestwood	Refurbishment complete
Mastin Moor	Development Worker in post
Old Whittington	Work commenced June 2004

Phase 2

Jacksdale	Building work commenced November 2004
Calverton	Services being developed
Warsop	Funding secured